

LINN

K I V O R
T U N B O K S
music library

OWNER'S MANUAL



Important Safety Information

Explanation of symbols used on the rear or underside of the apparatus:



This symbol is intended to alert the user to the presence of uninsulated dangerous voltages within the enclosure of sufficient magnitude to cause electric shock.



This symbol is intended to alert the user to the presence of important operation, maintenance and servicing information in the instruction and service manuals.

For apparatus connected to the mains electricity supply

CAUTION

TO REDUCE THE RISK OF ELECTRIC SHOCK DO NOT REMOVE THE COVER.

NO USER SERVICEABLE PARTS INSIDE.

REFER SERVICING TO QUALIFIED SERVICE PERSONNEL.

REPLACE THE MAINS FUSE IN THE PLUG WITH ONE OF THE SAME TYPE AND RATING.

DISCONNECT SUPPLY CORD BEFORE CHANGING FUSE.

WARNING

TO REDUCE THE RISK OF FIRE OR ELECTRIC SHOCK DO NOT EXPOSE THIS APPARATUS TO RAIN OR MOISTURE. SHOCK HAZARD - DO NOT OPEN.

MAINS PLUGS

This apparatus is supplied with a non-rewireable mains plug for the intended country.

Replacement mains leads can be obtained from your Linn retailer. Should you need to change the plug please dispose of it carefully. A plug with bared conductors is dangerous if engaged in a live socket.

The Brown wire must be connected to the Live (Line) supply pin.

The Blue wire must be connected to the Neutral supply pin.

The Green/Yellow wire must be connected to the Earth (Ground) supply pin.

Please contact your retailer or a competent electrician if you are in any doubt.

General Safety Instructions

1. **Read these instructions.**
2. **Keep these instructions.**
3. **Heed all warnings.**
4. **Follow all instructions.**
5. **Do not use the apparatus near water**, for example near a bathtub, washbowl, kitchen sink, laundry tub, in a wet basement, near a swimming pool etc.
6. **Clean only with dry cloth.**
7. **Do not block any ventilation openings. Install in accordance with the manufacturer's instructions.** Site the apparatus so that its location or position does not interfere with its proper ventilation. For example, the apparatus should not be situated on a bed, sofa, rug, or similar surface that may block the ventilation openings, or placed in a built-in installation such as a bookcase or cabinet that may impede the flow of air through the ventilation openings.
8. **Do not install near any heat sources such as radiators, heat registers, stoves, or other apparatus (including amplifiers) that produce heat.**
9. **Do not defeat the safety purpose of the polarised or grounding type plug.** A polarised plug has two blades with one wider than the other. A grounding type plug has two blades and a third grounding prong. The wide blade or the third prong is provided for your safety. If the provided plug does not fit into your outlet, consult an electrician for replacement of the obsolete outlet.
10. **Protect the power cord from being walked on or pinched particularly at plugs, convenience receptacles, and at the point where they exit from the apparatus.**
11. **Only use attachments/accessories specified by the manufacturer.**
12. **Use only with the stand, tripod, bracket, or table specified by the manufacturer, or sold with the apparatus.**
13. **Unplug this apparatus during lightning storms or when unused for long periods of time.**
14. **Refer all servicing to qualified service personnel.** Servicing is required when the apparatus has been damaged in any way, such as power-supply cord or plug has been damaged, liquid has been spilled or objects have fallen into the apparatus, the apparatus has been exposed to rain or moisture, does not operate normally, or has been dropped.
15. **Wall or ceiling mounting.** Mount the apparatus to a wall or ceiling only as recommended by the manufacturer.
16. **Power sources.** Connect the apparatus to a power supply only of the type described in the operating instructions or marked on the apparatus.
17. **Mains plug.** Use the mains plug to disconnect the apparatus from the mains supply. The mains plug must be accessible at all times. Use the mains switch (if applicable) when the apparatus is not in use.
18. **Power lines.** An outdoor antenna should be located away from power lines.
19. **Outdoor antenna grounding.** If an outdoor antenna is connected to the apparatus, ensure that the antenna system is grounded to provide some protection against voltage surges and static build up. In the USA see article 810 of the National Electrical Code ANSI/NFPA 70 concerning installation requirements.
20. **Telephone line.** Do not connect the apparatus to a telephone line except where specifically instructed to do so.
21. **Objects and liquid entry.** Do not let objects or liquids fall into the apparatus. Do not expose the apparatus to dripping or splashing. Do not place a vessel containing liquid on top of the apparatus.
22. **No naked flame sources, such as lighted candles, should be placed on the apparatus.**
23. **The apparatus has been designed for use in moderate and tropical climates.**

UK USERS PLEASE READ THIS IMPORTANT SAFETY INFORMATION

Replacing the fuse in the mains plug

This appliance is fitted with a non-rewireable 13 Amp mains plug. The plug contains a 5 Amp fuse. If the fuse has blown it can be replaced as follows:

- a) Pull out the red fuse cover/carrier.
- b) Remove and dispose of the blown fuse.
- c) Fit a new 5 Amp BS1362 approved fuse into the carrier and push the carrier back into the plug.

Always ensure the fuse cover is fitted. If the fuse cover is missing do not use the plug. Contact your Linn retailer to obtain a replacement fuse cover.

Fuses are for fire protection and do not protect against electric shock.

Mains plug replacement

Should your mains plug need replacing and you are competent to do this proceed as follows. If you are in doubt contact your Linn retailer or a competent electrician.

- a) Disconnect the plug from the mains supply.
- b) Cut off the plug and dispose of it safely. A plug with bared conductors is dangerous if engaged in a live socket.
- c) Only fit a 13 Amp BS1363A approved plug with a 5 Amp fuse.
- d) The cable wire colours or a letter will be marked at the connection points of most quality plugs.

Attach the wires securely to their respective points. The Brown wire must go to the Live pin, the Blue wire must go to the Neutral pin, and the Green/Yellow wire must go to the Earth pin.

- e) Before replacing the plug top ensure that the cable restraint is holding the outer sheath of the cable firmly and that the wires are correctly connected.

WARNING

THIS APPLIANCE MUST BE EARTHED.

Waste Electrical and Electronic Equipment (WEEE) Directive

Directive 2002/96/EC of the European Parliament and of the Council



The symbol (left) is shown on this product. It indicates that the product should not be disposed of with regular household waste, but should be disposed of separately.

Electrical and electronic equipment can contain materials that are hazardous to the environment and human health and therefore should be disposed of at a designated waste facility or returned to your retailer for the appropriate recycling to take place (see www.linn.co.uk for further information).

If you wish to dispose of this product and the product still functions, please consider recycling/reusing it by donating it to a charity shop, selling it or part-exchanging it with your retailer.

CE Declaration of Conformity & FCC Notice

CE Declaration of Conformity

Linn Products Ltd declare that this product is in conformance with the Low Voltage Directive 73/23/EEC and Electromagnetic Compatibility 89/336/EEC as amended by 92/31/EEC and 93/68/EEC.

The conformity of the designated product with the provisions of Directive number 73/23/EEC (LVD) is proved by full compliance with the following standards:

Standard number	Date of issue	Test type
EN60065	1998	General requirements Marking Hazardous radiation Heating under normal conditions Shock hazards under normal operating conditions Insulation requirements Fault conditions Mechanical strength Parts connected to the mains supply Components Terminal devices External flexible cords Electrical connections and mechanical fixings Protection against electric shock Stability and mechanical hazards Resistance to fire

The conformity of the designated product with the provisions of Directive number 89/336/EEC (EMC) is proved by full compliance with the following standards:

Standard number	Date of issue	Test type
EN55013	2001	Conducted emissions
EN55013	2001	Absorbed emissions
EN55020	2002	Immunity

FCC Notice

NOTE: This equipment has been tested and found to comply with the limits for a Class B digital device, pursuant to Part 15 of the FCC Rules. These limits are designed to provide reasonable protection against harmful interference in a residential installation. This equipment generates, uses and can radiate radio frequency energy and, if not installed and used in accordance with the instructions, may cause harmful interference to radio communications. However, there is no guarantee that interference will not occur in a particular installation. If this equipment does cause harmful interference to radio or television reception, which can be determined by turning the equipment off and on, the user is encouraged to try to correct the interference by one or more of the following measures:

- Reorient or relocate the receiving antenna.
- Increase the separation between the equipment and receiver.
- Connect the equipment into an outlet on a circuit different from that to which the receiver is connected.
- Consult the dealer or an experienced radio/TV technician for help.

Copyright and Acknowledgements

Copyright © Linn Products Limited. First edition November 2002.

Linn Products Limited, Glasgow Road, Waterfoot, Eaglesham, Glasgow, G76 0EQ, Scotland, United Kingdom.

All rights reserved. No part of this publication may be reproduced, stored in a retrieval system, or transmitted, in any form or by any means, electronic, mechanical, photocopying, recording, or otherwise, without the prior written consent of the publisher.

Printed in the United Kingdom.

KIVOR, TUNBOKS, REKURSIV, LINNTEK, OKTAL, KNEKT, INTERSEKT and the Linn logo are trade marks of Linn Products Limited, registered in at least the U.K. and/or European Union.

The information in this manual is furnished for informational use only, is subject to change without notice, and should not be construed as a commitment by Linn Products Limited. Linn Products Limited assumes no responsibility or liability for any errors or inaccuracies that may appear in this manual.

Copyright Notice

In the UK and other countries worldwide, the copying of any material protected by copyright is unlawful unless the copying of such material is authorised by the owner of the copyright.

It is the responsibility of the KIVOR™ TUNBOKS™ unit owner not to use the KIVOR™ TUNBOKS™ unit in any way that would infringe the law of copyright in whichever country it is used worldwide.

The KIVOR™ TUNBOKS™ unit must not be used in any manner

- i) other than for private and/or personal use, or
- ii) that could be considered to be directly or indirectly commercial.

If appropriate and/or where necessary, it is the responsibility of the user of the KIVOR™ TUNBOKS™ unit to obtain a license from the relevant collecting society or copyright owner whether in the UK or otherwise in order to avoid any copyright infringement. It is also the responsibility of the user of the KIVOR™ TUNBOKS™ unit to pay any fees relating to performance rights which may arise from the broadcast of any copyrighted material in public areas.

Linn Products Limited excludes all liability and accepts no responsibility for any unlawful use of the KIVOR™ TUNBOKS™ unit, and in particular, any use which infringes the law of copyright in the UK or any other country worldwide.

Trade Mark Acknowledgements

The Linn KIVOR™ TUNBOKS™ unit uses XiVA™ Link software from Imerge Limited.



At the heart of the KIVOR™ TUNBOKS™ unit is REKURSIV™ software developed by Linn Products Limited.

The Gracenote CDDB® Music Recognition ServiceSM



Music recognition technology and related data are provided by Gracenote and the Gracenote CDDB® Music Recognition ServiceSM. Gracenote is the industry standard in music recognition technology and related content delivery. For more information visit www.gracenote.com

CD and music-related data from Gracenote CDDB® Music Recognition ServiceSM
© 2000, 2001, 2002 Gracenote. Gracenote CDDB Client Software © 2000, 2001, 2002 Gracenote. U.S. Patents Numbers #5,987,525; #6,061,680; #6,154,773, and other patents issued or pending.

CDDB is a registered trademark of Gracenote. The Gracenote logo and logotype, the Gracenote CDDB logo and logotype, and the “Powered by Gracenote CDDB” logo are trade marks of Gracenote. Music Recognition Service and MRS are service marks of Gracenote.

Supply of this product does not convey a license nor imply any right to distribute content created with this product in revenue-generating broadcast systems (terrestrial, satellite, cable and/or other distribution channels), streaming applications (via Internet, intranets and/or other networks), other content distribution systems (pay-audio or audio-on-demand applications and the like) or on physical media (compact discs, digital versatile discs, semiconductor chips, hard drives, memory cards and the like). An independent license for such use is required. For details, please visit <http://mp3licensing.com>

MPEG Layer-3 audio coding technology licensed from Fraunhofer IIS and Thomson multimedia.

Contents

Introduction	2	Deleting Archives	9
Important notes	2		
The user interface	2	Additional Features	10
Unpacking	3	Naming albums, artists and tracks	10
Voltage selection	3	Arranging the database	10
Positioning	3	Refreshing the database	10
Cleaning	3	Available free space	10
 Connecting	 4	 Technical Specification	 11
 Accessing the Look-up Service	 5	 Guarantee and Service	 12
Modem connection	5		
Ethernet connection	5		
 Archiving CDs	 6		
Method 1	6		
Method 2	6		
Compression	7		
 Playback	 8		
Basic operation	8		
Play lists	8		
Further playback operations	9		

Introduction

The Linn KIVOR TUNBOKS is a concurrent archive and playback music library, capable of storing and accessing over 2750 hours of full bandwidth, CD quality audio. When used as part of a Linn KNEKT INTERSEKT multi-room audio system, the product is capable of supplying up to 16 sources of high quality, pitch accurate audio to a maximum of 128 rooms.

The KIVOR TUNBOKS hardware is managed by REKURSIV, Linn's proprietary music management software that provides safe and robust storage and ensures the integrity of all media in both domestic and marine environments. The KIVOR TUNBOKS is supplied with a single license copy of the LINNTEK PC Setup and Control Utility that allows the user to manage archived audio and create and administer individual play lists.

The KIVOR TUNBOKS has been designed to eliminate many of the quality problems associated with multi-CD changer products and hard disc storage systems, and represents our highest performance solution for the storage and playback of audio within a multi-room system.

Important notes: disc formats and types

Only audio CDs, CD-Rs and CD-RWs can be archived on to the KIVOR TUNBOKS. DVDs, SACDs, Video CDs etc, are not compatible with this unit.

Do not insert 8cm / 3" discs or irregularly shaped discs (heart-shaped, business card size etc) into the KIVOR TUNBOKS as they may damage the unit.

Whilst every effort has been made to ensure universal compatibility with all approved disc types, it is impossible to guarantee full operation of every function of the KIVOR TUNBOKS with every disc that is on sale now or in the future. We have tested many of the disc types that are currently available but many discs that are on sale at this time do not conform to the published and accepted formal specifications. For this reason, **we are unable to accept any responsibility for the KIVOR TUNBOKS being unable to archive or playback any particular disc.** If you have discs that do not archive/playback on the KIVOR TUNBOKS, which are subsequently found to archive/playback on other brands or types of hard disc recorders, then this does not imply that the KIVOR TUNBOKS is in any way at fault. There are many websites that display details of discs that have known playback problems and we suggest that you consult with this published data before you make any judgments regarding the archiving/playback abilities of the KIVOR TUNBOKS. We welcome the receipt of all suspect discs as this may assist us in ensuring that the KIVOR TUNBOKS continues to develop, but we cannot accept discs from end users on the basis that we have made any warranty about being able to learn how to archive or play them back.

The user interface

The operating controls for your KIVOR TUNBOKS and the contents of its database can be displayed on a PC or a third-party touch-screen device. The appearance and operation of the interface on touch-screen devices can be customized by the installer of your KIVOR TUNBOKS, to suit your requirements. The operating instructions and the user interface illustrations shown in this manual relate to the PC version of the interface – the LINNTEK Control Utility (included on the CD ROM) and therefore may not mimic those installed on a touch-screen device.

Unpacking

The KIVOR TUNBOKS is supplied with the following accessories:

- mains lead
- CD ROM containing LINNTEK PC Setup/Control Utility and owner's manual
- 2 x RJ-45 cable
- RJ-11 modem cable
- adapter for modem cable
- warranty card
- 4 x rack mounting screw
- Getting Started guide

We recommend that you retain all packaging in case you need to transport the unit at a later date.

Voltage selection

The KIVOR TUNBOKS contains an automatic internal mains voltage switch. This switch operates on all worldwide mains voltages from 100V to 240V. Manual adjustment on the product for setting the input mains voltage is not possible.



This unit must be earthed. Use the earthed moulded mains lead supplied.
Never use an unearthed plug or adaptor.

Positioning

Allow at least 10 cm/4" of space to the rear, sides and above the KIVOR TUNBOKS.

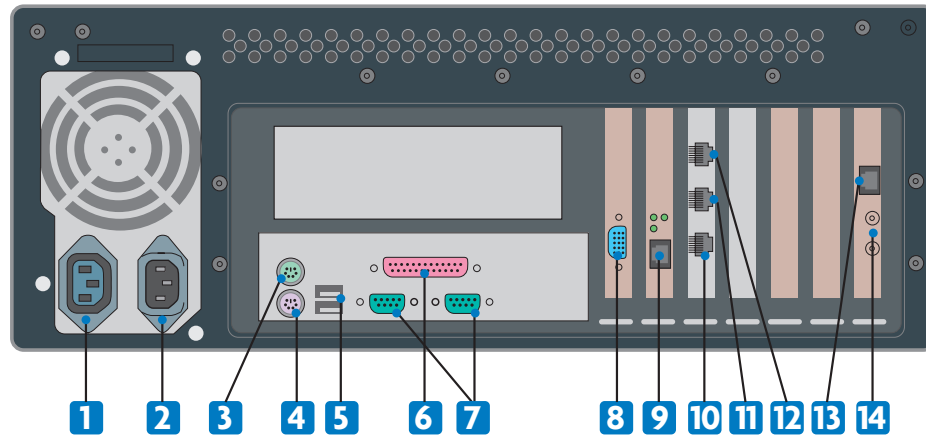
The unit has been designed to fit into a 48 cm / 19" rack.

Cleaning

Disconnect the KIVOR TUNBOKS from the power supply before cleaning. Remove dust and fingerprints with a soft, dry cloth. Avoid using domestic cleaning products on the unit. Be careful not to spray any cleaning products into the disc slot on the front panel.

Connecting

Back Panel



- 1** Power out
- 2** Power in Connect to the mains supply using the mains lead provided.
- 3** Not used
- 4** Not used
- 5** Not used
- 6** Not used
- 7** Comm 1 & 2 For connection to a Linn KIVOR LINNK*, PC or third-party control device (see Getting Started guide).
- 8** VGA monitor output For Linn installer or Linn dealer use.
- 9** Ethernet For connection to an Ethernet (Broadband / ADSL) network (use 10/100 BASE-T cable).
- 10** Sources 5-8 to Linn OKTAL
- 11** Sources 1-4 to Linn OKTAL
- 12** Not used
- 13** Modem For internet connection to a telephone line (use supplied RJ-11 cable).
- 14** Not used

*If you wish to use your KIVOR TUNBOX in a Linn KNEKT system, the unit must be connected via a Linn KIVOR LINNK.



The KIVOR TUNBOKS should be disconnected from the mains supply before connecting or disconnecting any of the plugs on the back panel. If this is not done you may generate surges which could damage the KIVOR TUNBOKS or other components in your multi-room or hi-fi system.

Before disconnecting the KIVOR TUNBOKS from the mains supply, it **must** be put into standby.

To put the KIVOR TUNBOKS into standby (using the LINNTEK Control Utility):

- Right-click on the title bar.
- Select **Close and Kivor: Standby**.
- Wait for two minutes.

The unit can now be disconnected from the mains supply.

Accessing the Look-up Service

The Gracenote CDDB® Music Recognition ServiceSM is an online database that contains artist, album and track title information for thousands of CDs. If your KIVOR TUNBOKS is configured to connect to an Internet Service Provider*, or uses an Ethernet connection, it can access the Gracenote CDDB Service. Artist, album and track title information will be shown in the LINNTEK Control Utility database pane.

Modem connection

To configure your KIVOR TUNBOKS to access the Gracenote CDDB Service via the modem:

- Right-click on the bar at the top of the LINNTEK Control Utility screen.
- Click **Configuration**.
- Select the **Connection Type** tab.
- Select the **Modem** option.
- Select the **Account Settings** tab.
- Enter the telephone number you use to connect to your Internet Service Provider.
- Enter the user name and password you use to log-on to your Internet Service Provider.
- Click **OK**.

*Your Internet Service Provider must accept dial-up networking connections.

Note:

The KIVOR TUNBOKS has been factory configured for connection by modem to UK-ONLINE should you wish to use their service (the pre-configured telephone number, user name and password are not shown). Entering information for your preferred Internet Service Provider will overwrite the factory configuration.

Ethernet (Broadband / ADSL) connection

To configure your KIVOR TUNBOKS to access the Gracenote CDDB Service via an Ethernet connection:

- Right-click on the bar at the top of the LINNTEK Control Utility screen.
- Click **Configuration**.
- Select the **Connection Type** tab.
- Select the **Ethernet** option.
- Select the **Ethernet Settings** tab.
- Select the desired mode and enter the necessary Internet settings.
- Click **OK**.

If you are using an Ethernet connection, your KIVOR TUNBOKS can be further configured to automatically access the Gracenote CDDB Service when a disc is inserted.

To do this:

- Right-click on the bar at the top of the LINNTEK Control Utility screen.
- Click **Settings**.
- Check the **Automatically look up disc information** checkbox.
- Click **OK**.

Archiving CDs

Important:

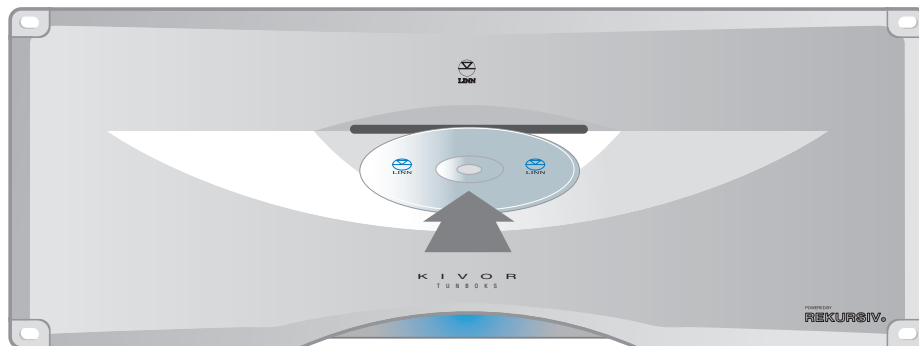
Do not attempt to insert a CD into the KIVOR TUNBOKS if there is one already in the unit.

Do not insert 8cm discs or irregularly shaped discs (heart-shaped, business card size etc) into the KIVOR TUNBOKS as they may damage the unit.

Method 1

To archive a CD:

- Run the LINNTEK Control Utility on your PC.
- Insert the CD, label side up, into the slot on the front panel of the KIVOR TUNBOKS until the disc mechanism draws the disc in.



- Wait a few seconds for the KIVOR TUNBOKS to read the contents information on the disc.
- Press **Record All** if you wish to archive the whole album.

or

- Press **Custom** if you wish to archive certain tracks only, then follow the on-screen instructions.

When archiving has finished, the disc mechanism will eject the CD.

See important notes below for more information and further options

Method 2

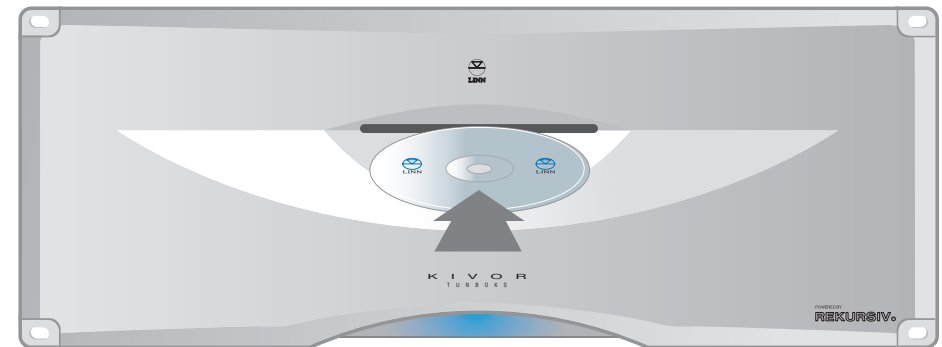
The KIVOR TUNBOKS can be configured to automatically archive a CD when one is inserted.

To configure the KIVOR TUNBOKS to allow automatic archiving:

- Right-click on the bar at the top of the LINNTEK Control Utility screen.
- Click **Settings**.
- Check the **Automatically record disc when inserted** checkbox.
- Click **OK**.

To archive a CD:


- Insert the CD, label side up, into the slot on the front panel of the KIVOR TUNBOKS until the disc mechanism draws the disc in.



When archiving has finished, the disc mechanism will eject the CD.

See important notes below for more information and further options

Important notes:


If you wish to eject a disc without waiting for it to auto-eject, press  on the LINNTEK Control Utility.


If the above fails to eject the disc or if you wish to eject and do not have immediate access to the LINNTEK Control Utility, the 'hard eject' can be activated. To do this, insert a pin, a straightened paper-clip or a similar implement into the small pin-hole underneath the disc-drive slot to push the micro-switch concealed within.

If you are using a modem connection to access the Gracenote CDDB Service, you will have to instruct the KIVOR TUNBOKS to go online and access the service. To do this, right-click on an album or track and select **Go online and look up**.

If you have not configured the KIVOR TUNBOKS to access the Gracenote CDDB Service, or if you have but the CD you are archiving is not included on the Gracenote CDDB Service, the CD will be shown on your LINNTEK Control Utility screen as Artist or New Artist.

If you wish to amend the album list (rename or delete an album or track, etc), right-click on the album or track title, select the appropriate option and amend as required using your PC keyboard.

When the KIVOR TUNBOKS has finished archiving a track, the  symbol is shown next to the track title. This indicates that you can now listen to that track.

If the  symbol is shown beside a track, this indicates that the track has not yet finished archiving, has not archived correctly (perhaps the disc is dirty, damaged or corrupted) or has not been recognised as a CD audio track.

You can listen to albums/tracks on the KIVOR TUNBOKS while it is archiving a CD.

The KIVOR TUNBOKS is compatible with recordable and re-recordable CDs. This feature allows you to archive radio broadcasts or other recordings that you have stored on CD-R/CD-RWs. It is the responsibility of the owner of the KIVOR TUNBOKS to ensure that they are not in breach of any copyright laws in regard to archiving radio broadcasts or any other material. Archives of radio broadcasts will generally not be identifiable by the Gracenote CDDB Service.

Compression

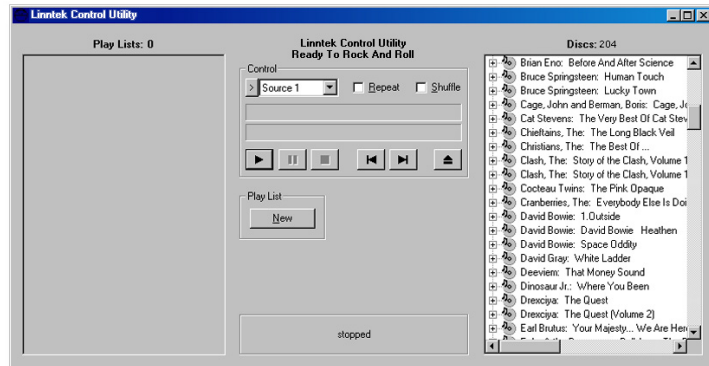
The KIVOR TUNBOKS can be configured to compress the audio signal from a CD while it is archiving. Compressing the audio signal allows more CDs to be archived on to the KIVOR TUNBOKS, however, adding compression reduces sound quality. Please note, archiving time is longer if compression is added.

To configure the KIVOR TUNBOKS to add compression during archiving:

- Right-click on the bar at the top of the LINNTEK Control Utility screen.
- Click **Configuration**.
- Select the **Recording** tab.
- Select the level of compression you wish to use.
- Click **OK**.


Playback

The LINNTEK Control Utility screen



Basic operation

To listen to an album:



- Click the album title once to highlight it.
- Press .

The chosen album will begin playback from the first track.
or

- Double-click the album title.


The chosen album will begin playback from the first track.

To listen to a track:

- Click the  icon next to the album that contains the desired track. All the tracks on the album are shown.
- Click the desired track title once to highlight it.
- Press .

The chosen track will begin playing.

or

- Click the  icon next to the album that contains the desired track. All the tracks on the album are shown.
- Double-click the desired track title.

The chosen track will begin playing.

Note:

To hide the track titles from view, click the  icon next to the album's title.

Play lists


To make a play list folder:

- Press the **New** button under Play List.

A new folder is shown in the play list pane.

- Enter a name for the play list.


To add a track to a play list:

- Click the  icon next to the album that contains the desired track. All the tracks on the album are shown.
- Highlight the desired track then drag and drop it on to the required play list.

Tip:


You can position a track in a particular place in a play list by dropping it into the desired position on the list.

To add an album to a play list:

- Click the  icon next to the desired album.
- Drag and drop the title of the album on to the name of the play list.

The track titles will be added to the play list, but not the name of the album itself.

To listen to a play list:

- Click the play list's name once to highlight it.
- Press .



The chosen play list will begin playback from the first track.

or

- Double-click the play list's name.


The chosen play list will begin playback from the first track.

To listen to a track from a play list:

- Click the  icon next to the play list that contains the desired track. All the tracks in the play list are shown.
- Click the desired track title once to highlight it.
- Press .

The chosen track will begin playing.

or

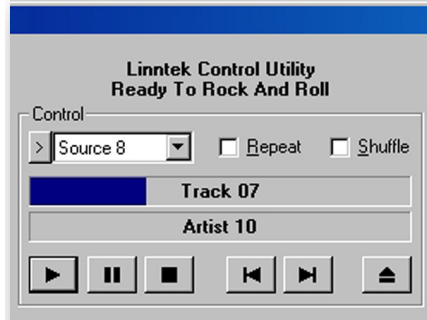
- Click the  icon next to the play list that contains the desired track. All the tracks in the play list are shown.
- Double-click the desired track title.

The chosen track will begin playing.

Note:

To hide the track titles from view, click the  icon next to the play list's name.

Further playback operations





To jump forwards or backwards through a track:

- While the track is playing, position the pointer of the mouse at the approximate point in the track title bar that you wish to access, then click once.

Tip:

The middle of the track title bar corresponds to half-way through a track.

To skip forwards or backwards through the tracks on an album or in a play list:

- To skip forwards, press .
- To skip backwards, press .

To repeat an album or play list:

- Check the **Repeat** checkbox either before or during playback.

To shuffle the playing sequence of tracks on an album or in a play list:

- Check the **Shuffle** checkbox before starting playback.

Deleting Archives

To delete an album:

- Highlight the album title you wish to delete.
- Right-click the mouse to bring up the album options menu.
- Click **delete disc**.
- Press the **OK** button.

To delete a track:

- Highlight the track you wish to delete.
- Right-click the mouse to bring up the track options menu.
- Click **delete track**.
- Press the **OK** button.

To delete a play list:

- Highlight the play list you wish to delete.
- Right-click the mouse to bring up the play list options menu.
- Click **delete play list**.
- Press the **OK** button.

Additional Features

Naming albums, artists and tracks

If you are not using the Gracenote CDDB Music Recognition Service, or if you are but a particular CD is not included on the Gracenote CDDB Service, you can add album, artist and track information yourself (you can also amend any information already entered).

To do this:

- Right-click on the album or track title.
- From the menu select what album information you wish to add or correct.
- Use your keyboard to enter the information.

Note:

If you change any details relating to a CD that is included on the Gracenote CDDB Service, the disc information will **not** be altered by the service on subsequent look ups.

Arranging the database

You can arrange the database by disc name or by artist name.

To change the arrangement:

- Right-click on any album or track title.
- Select **sort by: disc name** or **sort by: artist name**.

Refreshing the database

If you have added albums or tracks to the KIVOR TUNBOKS but they do not appear on the database, **do the following**:

- Right-click on the bar at the top of the LINNTEK Control Utility screen.
- Click **Sync With Kivor**.

Available free space

To check how much free space is available on your KIVOR TUNBOKS:

- Right-click on the bar at the top of the LINNTEK Control Utility screen.
- Click **Settings**.
- Select the **Free Space** tab.

Technical Specification

General

Dimensions:	177 mm (H) x 482 mm (W) x 505 mm (D) 7" (H) x 19" (W) x 20" (D)
Weight:	12 kg to 20 kg 26 lbs to 44 lbs
Power consumption:	155 W Max, typical use. <3 W in standby.

Connections

Signal	Connector	Level	Impedance
USB	USB port	-	-
Comms 1&2	9 pin D-type	1V pp	110 Ω
Ethernet	RJ-45	-	-
PCI (AES/EBU)	RJ-45	1V pp	110 Ω
Video	15 pin D-type	-	-
Modem	RJ-11	-	-

Guarantee and Service

This product is guaranteed under the conditions which apply in the country of purchase and your statutory rights are not limited. In addition to any statutory rights you may have, Linn undertake to replace any parts which have failed due to faulty manufacture. To help us, please ask your Linn retailer about the Linn warranty scheme in operation in your country.

In parts of Europe, the United States of America and some other markets, extended warranty may be available to customers who register their purchase with Linn. A warranty registration card is included with the product and should be stamped by your retailer and returned to Linn as soon as possible.

Warning

Unauthorised servicing or dismantling of the product invalidates the manufacturer's warranty. There are no user serviceable parts inside the product and all enquiries relating to product servicing should be referred to authorised retailers only.

Technical support and information

For technical support, product queries and information, please contact either your local retailer or one of the Linn offices opposite.

Full details of your local retailer/distributor can be found on the Linn web site:
www.linn.co.uk

Important

Please keep a copy of the sales receipt to establish the purchase date of the product. Please ensure that your equipment is insured by you during any transit or shipment for repair.

Linn Products Limited

Glasgow Road
Waterfoot
Eaglesham
Glasgow G76 0EQ
Scotland, UK
Phone: +44 (0)141 307 7777
Fax: +44 (0)141 644 4262
Helpline: 0500 888909
Email: helpline@linn.co.uk
Website: www.linn.co.uk

Linn Incorporated

8787 Perimeter Park Boulevard
Jacksonville
FL 32216
USA
Phone: +1 (904) 645 5242
Fax: +1 (904) 645 7275
Helpline: 888-671-LINN
Email: helpline@linninc.com
Website: www.linninc.com

Linn Deutschland GmbH

Hühnerposten 1d
D-20097 Hamburg
Germany
Phone: +49-(0) 40-890 660-0
Fax: +49-(0) 40-890 660-29
Email: info@linngmbh.de
Website: www.linn.co.uk

PACK 829/2